

FAN12

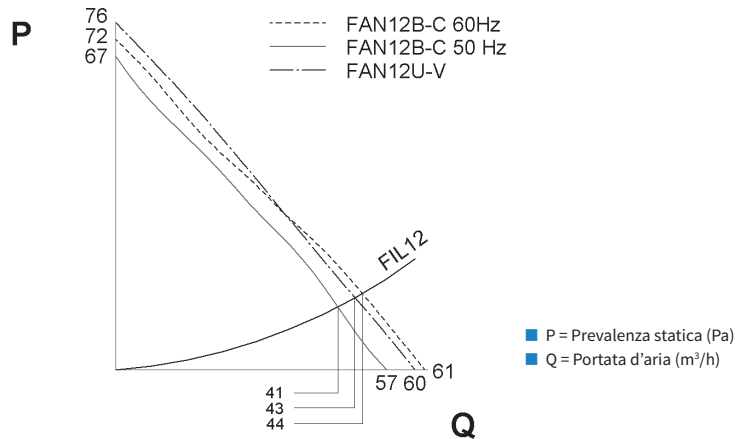
Gruppi di ventilazione con filtro

PORTATA ARIA

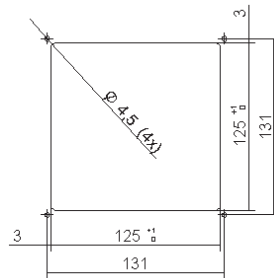
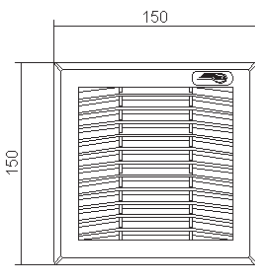
57/61 - 60 m³/h



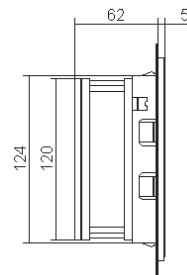
PRESTAZIONI



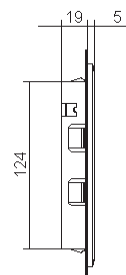
DIMENSIONI



FAN08



FIL08



DIME DI FORATURA

NOTA: Le dime di foratura sono puramente indicative.
Per qualsiasi esigenza contattare il nostro ufficio tecnico-commerciale

| Caratteristiche | U.M. | FIL12XN0B | FAN12BN0B | FAN12CN0B | FAN12UN0B | FAN12VN0B |
|-----------------------------|-------------------|------------|--|--------------|--------------------------------------|------------|
| Portata aria | m ³ /h | - | 57/61 | 57/61 | 60 | 60 |
| Alimentazione | V ~ Hz | - | 230 1~ 50-60 | 115 1~ 50-60 | 24 V DC | 48 V DC |
| Dimensioni AxLxP | mm | 150x150x24 | 150x150x67 | 150x150x67 | 150x150x67 | 150x150x67 |
| Potenza elettrica assorbita | W | - | 21/18 | 21/18 | 7 | 9 |
| Corrente max | A | - | 0,13/0,11 | 0,28/0,22 | 0,26 | 0,18 |
| Connessione elettrica | - | - | Faston | Faston | Faston | Faston |
| Limiti di temperatura | °C | -30+75 | -10+50 | -10+50 | -10+50 | -10+55 |
| Grado di protezione EN60529 | - | IP54 | IP54 | IP54 | IP54 | IP54 |
| Livello rumore | dB (A) | - | 43/48 | 43/48 | 43 | 43 |
| Portata FAN + FIL | m ³ /h | - | 1x FIL12XN0B: 41/44 1x FIL25XN0B: 47/51 | | 1x FIL12XN0B: 43 1x FIL25XN0B: 49 | |
| Filtro (Eurovent) | - | EU4 | EU4 | EU4 | EU4 | EU4 |
| Peso | kg | 0,1 | 0,7 | 0,7 | 0,7 | 0,7 |
| Conformità | - | CE | CE | CE | CE | CE |