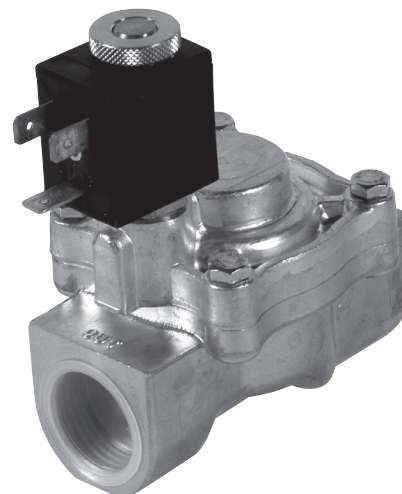


ACCESSORIES

C15000119/120

Solenoid valves

Two-way powered solenoid valves with NBR membrane seal and brass body. They are usually closed and control the water passage.



Characteristics	M.U.	C15000119	C15000120
Working temperature limits (fluid)	°C	-10 +90	-10 +90
Water flow rate (p 1 bar)*	l/min	40	90
Max. pressure	bar	18	16
Fitting type	"	G 1/2	G 3/4

* p = differential pressure value

C16000140

Level switch

Level switch to control water level. The float lifting controls magnetically a NO hermetically-sealed contact inside the slide bar. The magnetic unit has placed inside float and doesn't come into contact with the liquid.



Characteristics	M.U.	C16000140
Max. temperature	°C	105
Max. pressure	bar	6
Contact	-	NO
Switching capacity	A	0,5
Max. tension	V	300
Dimensions	mm	L50 Ø25
Thread	"	G 1/8
Electric connection	-	Cable L=1m
Protection level EN60529	-	IP65